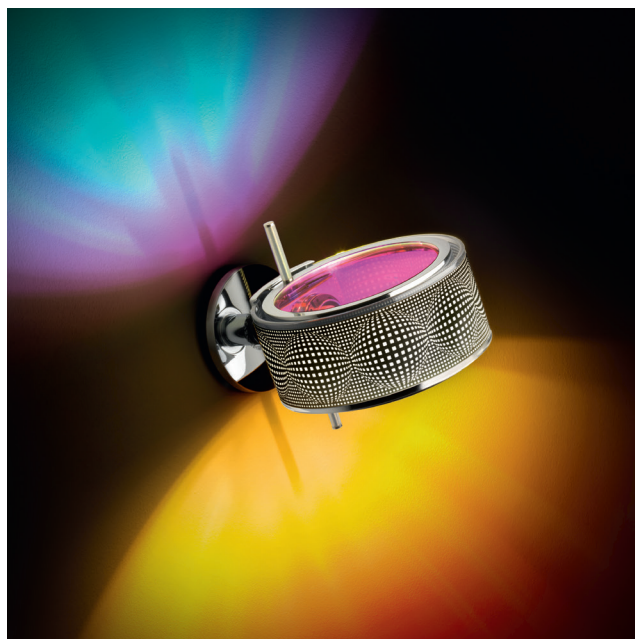
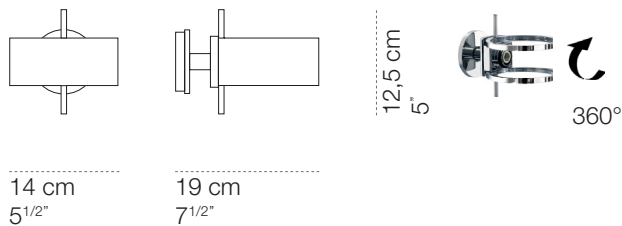


newComponi200 uno parete



luminaire - structure	
materials	aluminium, steel
environment	interiors
mounting location	wall
emission	direct, indirect, diffused, mixed, accent light
weight	0,6 kg
tension	230V
IP classification	IP20
certifications	CE □ ▽
design	Luta Bettonica, Luca Melocchi, Mario Melocchi, 2009-2019

light source	
source	LED
socket	B15d
bulb included	yes
number of LED	1
power	8 W
luminous flux	1.055 lm
colour temperature	2.700 K

finish - structure



chrome
cod 010B



satin nickel-plated
cod 011B

components

Componi200 anello



retinato cod 025 sfere black cod 020 sfere white cod 021 sfere red cod 022 sfere yellow cod 023 sfere blue cod 024

Componi200 disco



transparent cod 035 satinato cod 036 opalescente quadrettato cod 038 red dichroic cod 039 yellow dichroic cod 040 blue dichroic cod 041

Componi200 lente



lente 105° transparent cod 030 lente 70° transparent cod 031