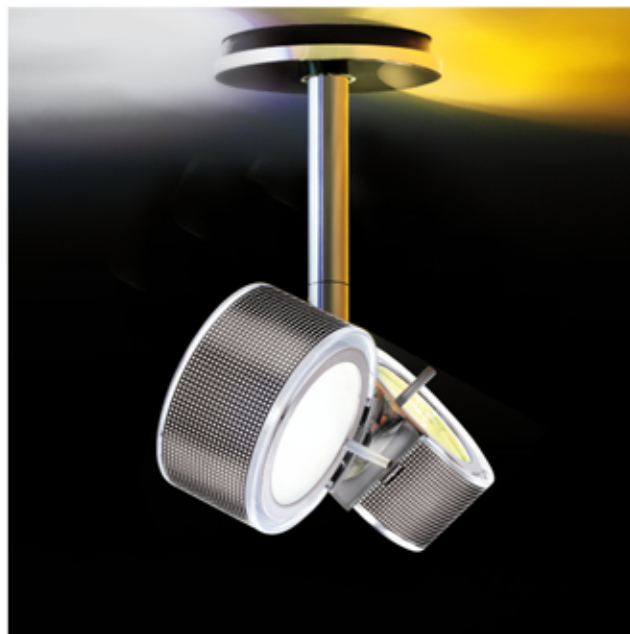
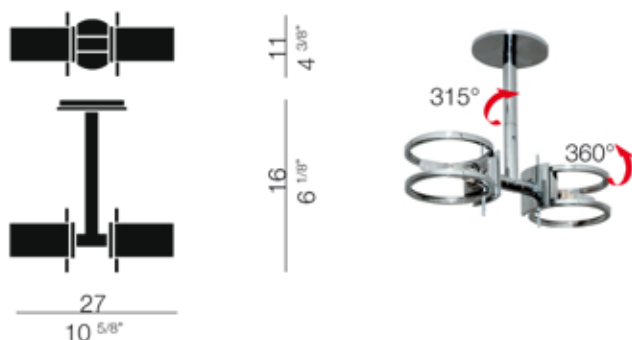


## Componi75 due parete/soffitto 25

For illuminating small spaces or for installation in series to create patterns of light with white or coloured, ambient and accent lighting; can be assembled by hand, without any tools. Lighting body rotates through 360°.



### LUMINAIRE (structure)

materials	<b>brass, steel, aluminium</b>
environment	<b>interiors</b>
mounting location	<b>wall/ceiling</b>
emission	<b>direct/indirect/diffused/accent/mixed light</b>
weight	<b>1,5 kg</b>
tension	<b>230V</b>
insulation class	<b>2</b>
IP classification	<b>IP20</b>
marks	<b>CE</b>
design	Luta Bettonica, Luca Melocchi, Mario Melocchi, 2009

### LIGHT SOURCE

source	<b>halogen energy saver</b>
socket	<b>G9</b>
ILCOS code	<b>HSGST/C//UB</b>
bulb included	<b>yes</b>
number of bulbs	<b>2</b>
power	<b>2x60W (max 2x75W)</b>
life	<b>2.000 h</b>
energy label	<b>C</b>
luminous flux	<b>2x980 lm</b>
colour temperature	<b>2.900 °K</b>

### FINISHES



### COMPONENTS

#### Componi75 anello



#### Componi75 disco

